

Description:

Two cartridge style direct acting relief valves in a body with two through passages. This valve limits pressure in one passage by relieving to the other. Typical use is to protect a cylinder or motor from load induced pressures.

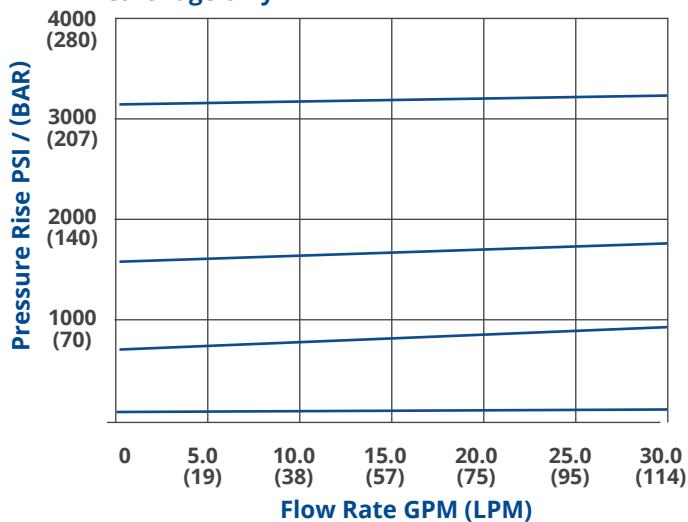
Features:

- Fast-acting direct area relief
- Optional spring ranges to limit maximum setting
- Hardened poppet and cage for long life
- Zinc plated exposed steel parts
- Anodized aluminum body for corrosion protection
- Standard setting is 1800 PSI

(Other settings can be specified, see model code on back.)

Flow Characteristics (32 CST / 150 SUS oil at 40C)

Cartridge only



Specifications:

Maximum Pressure (Aluminum body)	3,000 PSI (207 BAR)
Maximum setting	3,300 PSI (227 Bar)
Maximum flow	20 GPM (75 LPM)
Port size	SAE - 10
Body material	Aluminum
Filtration	ISO 4406
Fluids	Mineral based or synthetics 50-2000 SUS
Approx. Weight	2.1 Lbs.

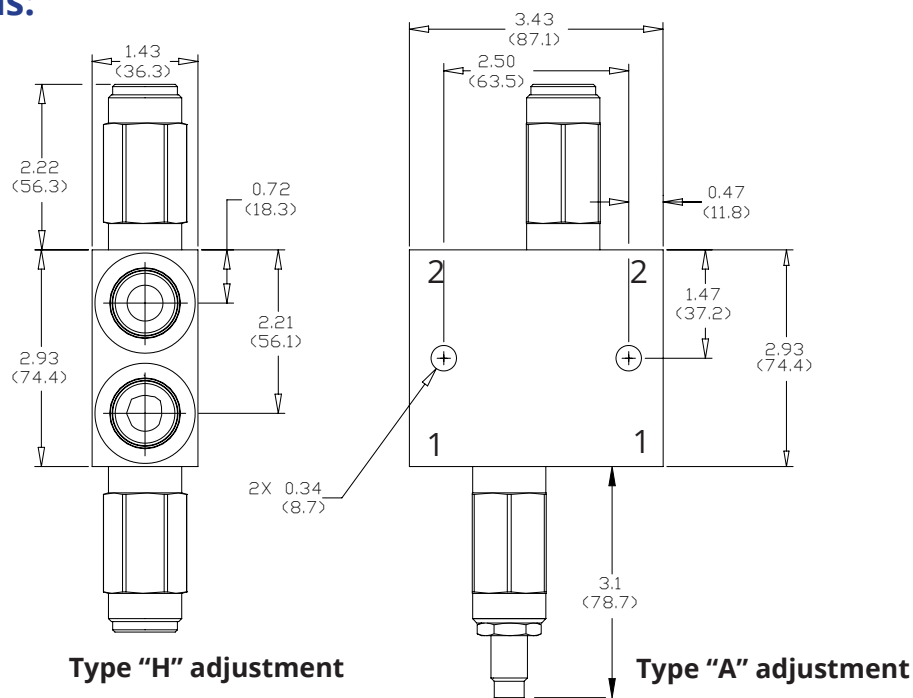
The data and application materials contained herein are furnished for information only and believed to be reliable. Questions regarding specific applications or performance should be directed to JEM's application department. Since our products are being continuously improved, data contained herein is subject to change without notice. Warranty on FastLine products is 1 year from the date of sale.

JEM Technical
 (888) 256-8266
www.jemtechnical.com



JEM Technical Canada Ltd.
 (204) 654-1743
www.jemtechnical.ca

Installation Dimensions:



() Parentheses = Millimeters

How To Order:



Example model code
is an in-stock
FastLine solution

CRV102 A - 410T _ _ - 18 - _ _

Base Part

Adjustment Type:

A = 1/4" Hex Allen Head
H = Hidden Adjustment

4 Ports
Size SAE 10

Body Material:
Omit = Aluminum
D = Ductile *

Omit if pressures are the same:
Relief Setting = PSI ÷ 100

Relief Setting = PSI ÷ 100
Std. adjustment range: 250-3600 PSI

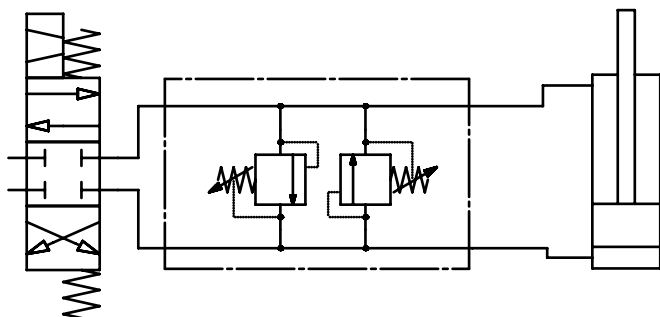
Seal Type:
Omit = Buna N
V = Fluorocarbon
P = Polyurethane

Type "A" adjustment is the standard offering. Hidden adjustment may have a longer lead time.

* Fluorocarbon seals are used when temperatures exceed 212° f (100 ° c).

* Ductile bodies have limited availability. Ductile bodies are recommend for working pressures over 3000 PSI.

Typical Cylinder Application



Typical Motor Application

