

Description:

Cartridge style counterbalance valves with an internally vented spring chamber and a reverse flow check. Intended for use as a motion control and over-center load holding valve.

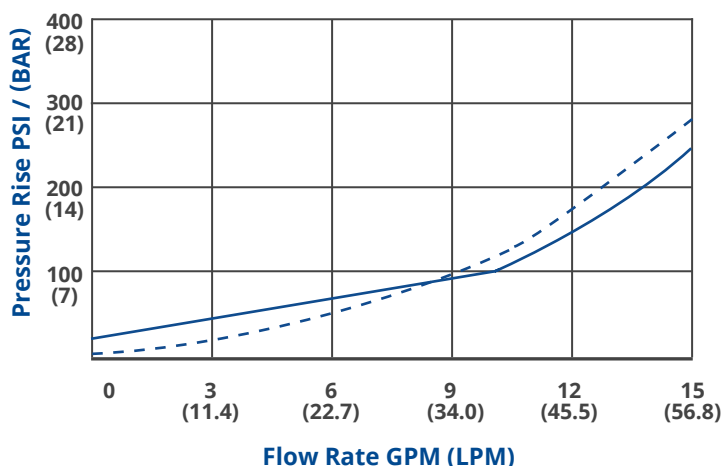
Features:

- Common pilot ratios 2.3:1, 4:1, 4.5:1, 10:1
- Leak proof adjustment screw
- Quiet stable operation
- Low hysteresis
- Zinc plated exposed steel parts
- Anodized aluminum body for corrosion protection
- Standard setting is 3000 PSI

(Other settings can be specified, see model code on back.)

Flow Characteristics (32 CST / 150 SUS oil at 40C)

— Piloted Open ---- Free Flow



Specifications:

Maximum pressure (Aluminum body)	3000 PSI (207 BAR)
Maximum setting	5000 PSI (345 BAR)
Maximum flow	15 GPM (57 LPM)
Port size	SAE -08
Body material	Aluminum
Filtration	ISO 4406
Fluids	Mineral based or synthetics 50-2000 SUS
Approx. Weight	3.2 Lbs.

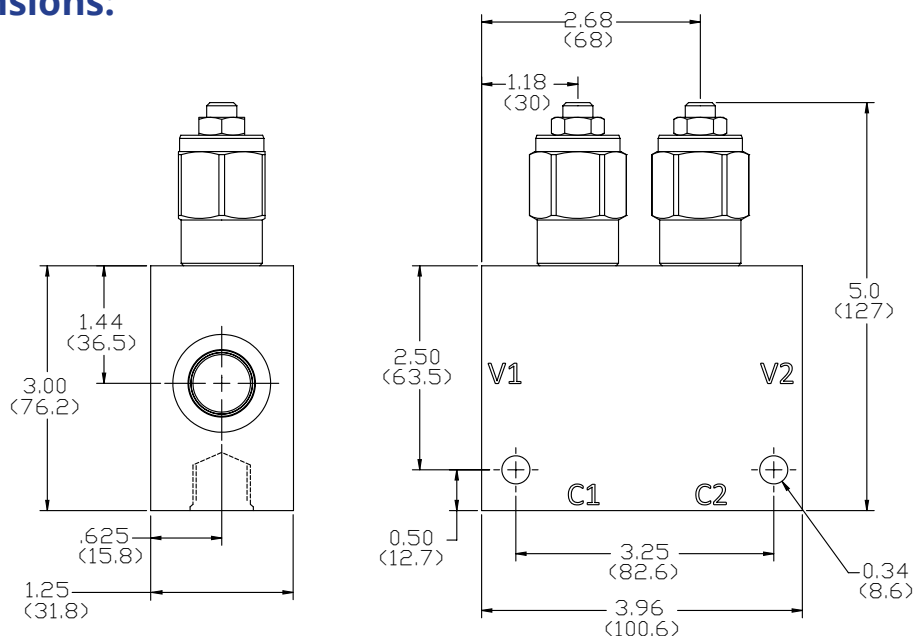
The data and application materials contained herein are furnished for information only and believed to be reliable. Questions regarding specific applications or performance should be directed to JEM's application department. Since our products are being continuously improved, data contained herein is subject to change without notice. Warranty on FastLine products is 1 year from the date of sale.

JEM Technical
 (888) 256-8266
www.jemtechnical.com



JEM Technical Canada Ltd.
 (204) 654-1743
www.jemtechnical.ca

Installation Dimensions:



() Parentheses = Millimeters

How To Order:

F Example model code
is the in-stock
FastLine solution

DCBV20M A - 408T _ _ - 4 - 30 - 30

Base Part No.

Adjustment Type:
A = Hex Allen Head

4 Ports
Size SAE 08

Body Material:
Omit = Aluminum
D = Ductile *

Pilot Ratio
2.3 = 2.3:1
4 = 4:1
4.5 = 4.5:1
10 = 10:1

Seal Type:
Omit = Buna N
V = Fluorocarbon**

CBV2 Setting PSI ÷ 100
CBV1 Setting PSI ÷ 100
Std. adjustment range: 500-5000 PSI

Not all Pilot ratios are available from stock. 4:1 ratio is the standard offering.

* Ductile bodies have limited availability. Ductile bodies are recommended for working pressures over 3000 PSI.

** Fluorocarbon seals are used when temperatures exceed 212° F (100° C).

Typical Application

